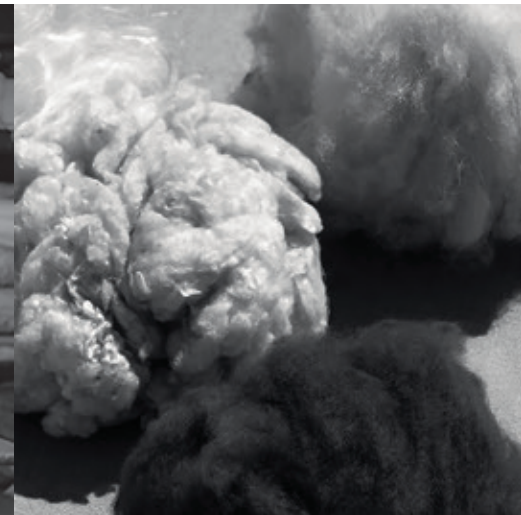


VISPRING

Luxury Beds - London 1901



Retail Support Manual - EMEA

RETAILER'S COPY

VISPRING

Luxury Beds - London 1901

Contents

Vispring Luxury Collection

Luxury Mattress and Divan Sets	4 - 14
The Luxe Collection	4
The Classic Collection	10
The Original Collection	13
Limited Edition Sets	15

Legs and Castors

16

Headboards

Headboard range	18 - 20
-----------------	---------

Accessories

Toppers	22
Drawer Divans	24
Divan heights, Divan splits	25
Divan corners	26
Divan skirts, Cut-out corners, Zipping, Mantle	27
Loose Bedskirts, Fitted Divan Cover, Quilted Mattress Protectors, Mattress Pads	28
Pillows	29
Duvets	30

Customer's Own Material (C.O.M.)

31 - 35

General Information

36 - 38



MATTRESSES AND DIVANS

VISPRING

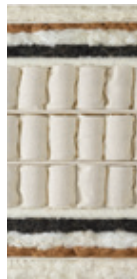
Luxury Beds - London 1901

THE LUXE COLLECTION

DIAMOND MAJESTY MATTRESS + PRESIDENT DIVAN



DIAMOND MAJESTY



MATTRESS

TECHNOLOGY

- Three layer hand-nested calico pocket spring construction
- Springs diameter: 60 mm
- 4182 springs in size 200 x 200 cm
- **3876 springs in size 180 x 200 cm**
- 3162 springs in size 150 x 200 cm
- 1836 springs in size 90 x 200cm

UPHOLSTERY

- British wool (300 gsm), British horse tail (900 gsm), Shetland wool (450 gsm) blended with cashmere (200 gsm), silk (200 gsm) and bamboo (200 gsm), vicuna (200 gsm), Shetland fleece wool and organic cotton (900 gsm)
- Finest quality ticking
- Hand-tied woollen tufts and twine
- Made with M-Pure - a natural flame retardant finish

BORDERS

- Upholstered with coir and wool and finished in British Merino wool
- 6 rows of hand side-stitching
- Horizontal handles
- Air vents
- Overall mattress depth: 28 cm + 6 cm doming (+/- 2 cm)



PRESIDENT



DIVAN

CONSTRUCTION

- Two layer hand-nested calico pocket spring construction
- 3320 springs in size 180 x 200 cm
- Solid beech frame

UPHOLSTERY

- Long-stranded horsehair (1200 gsm), blended British fleece wool and cotton
- Finest quality ticking or upholstery fabric

HEIGHT

- President 33,5 cm
- President low 25 cm

(Divan measured from bottom edge to top edge)

gsm - grammes per square metre

VISPRING

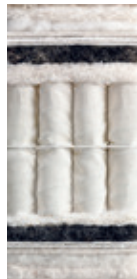
Luxury Beds - London 1901

THE LUXE COLLECTION

MAGNIFICENCE MATTRESS + VICEROY DIVAN



MAGNIFICENCE



MATTRESS

TECHNOLOGY

- Two layer hand-nested calico pocket spring construction
- Springs diameter: 49 mm
- 3724 springs in size 200 x 200 cm
- **3420 springs in size 180 x 200 cm**
- 2812 springs in size 150 x 200 cm
- 1748 springs in size 90 x 200 cm

UPHOLSTERY

- Exclusive natural fillings: blended real Shetland wool and cotton (900 gsm), Austrian hand-opened long-strand Moosburger® horse tail (610 gsm), hand-teased real Shetland wool (600 gsm), cashmere (200 gsm), mohair (200 gsm), blended real Shetland wool and cotton (1200 gsm)
- Finest quality ticking
- Hand-tied woollen tufts and twine
- Made with M-Pure - a natural flame retardant finish

BORDERS

- Upholstered with coir and wool
- 5 rows of hand side-stitching
- Horizontal handles
- Air vents
- Overall mattress depth: 25 cm + 6 cm doming (+/- 2 cm)



VICEROY



DIVAN

CONSTRUCTION

- Two layer hand-nested calico pocket spring construction
- 2416 springs in size 180 x 200 cm
- Solid timber frame

UPHOLSTERY

- Horsehair pad (1200 gsm), blended British fleece wool and cotton (1200 gsm)
- Finest quality ticking or upholstery fabric

HEIGHT

- Viceroy 33,5 cm
- Viceroy low 25 cm

(Divan measured from bottom edge to top edge)

gsm - grammes per square metre

VISPRING

Luxury Beds - London 1901

THE LUXE COLLECTION

SIGNATORY MATTRESS + VICEROY DIVAN



SIGNATORY



MATTRESS

TECHNOLOGY

- Two layer hand-nested calico pocket spring construction
- Springs diameter: 50 mm
- 3552 springs in size 200 x 200 cm
- **3526 springs in size 180 x 200 cm**
- 2664 springs in size 150 x 200 cm
- 1628 springs in size 90 x 200 cm

UPHOLSTERY

- Exclusive natural fillings: blended real Shetland wool and cotton (900 gsm), Austrian hand-opened long-strand Moosburger® horsetail (450 gsm), hand-teased real Shetland wool (600 gsm) blended with cashmere (200 gsm), blended real Shetland wool and cotton (900 gsm)
- Finest quality ticking
- Hand-tied woollen tufts and twine
- Made with M-Pure - a natural flame retardant finish

BORDERS

- Upholstered with coir and wool
- 4 rows of hand side-stitching
- Horizontal handles
- Air vents
- Overall mattress depth: 23 cm + 6 cm doming (+/- 2 cm)

M-Pure
Wool and Natural Fire

VICEROY



DIVAN

CONSTRUCTION

- Two layer hand-nested calico pocket spring construction
- 2416 springs in size 180 x 200 cm
- Solid timber frame

UPHOLSTERY

- Horsehair pad (1200 gsm), blended British fleece wool and cotton (1200 gsm)
- Finest quality ticking or upholstery fabric

HEIGHT

- Viceroy high 33,5 cm
- Viceroy low 25 cm

(Divan measured from bottom edge to top edge)

gsm - grammes per square metre

VISPRING

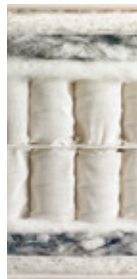
Luxury Beds - London 1901

THE LUXE COLLECTION

SUBLIME SUPERB MATTRESS + SOVEREIGN DIVAN



SUBLIME SUPERB



MATTRESS

TECHNOLOGY

- Two layer hand-nested calico pocket spring construction
- Springs diameter: 51 mm
- 3420 springs in size 200 x 200 cm
- **3080 springs in size 180 x 200 cm**
- 2520 springs in size 150 x 200 cm
- 1540 springs in size 90 x 200 cm

UPHOLSTERY

- Exclusive natural fillings: British fleece wool (300 gsm), South American hand-teased horsetail (610 gsm) blended with real Shetland wool (610gsm), silk (150 gsm) and mohair (150 gsm), blended real Shetland wool and cotton (1200 gsm)
- Finest quality ticking
- Hand-tied woollen tufts and twine
- Made with M-Pure - a natural flame retardant finish

BORDERS

- Upholstered with coir and wool
- 4 rows of hand side-stitching
- Horizontal handles
- Air vents
- Overall mattress depth: 23 cm + 6 cm doming (+/- 2 cm)

M-Pure
Wool and Natural Fire

SOVEREIGN



DIVAN

CONSTRUCTION

- Hand-nested calico pocket spring construction
- 1660 springs in size 180 x 200 cm
- Solid timber frame

UPHOLSTERY

- Coir (1200 gsm), blended British fleece wool and cotton (1200 gsm)
- Finest quality ticking or upholstery fabric

HEIGHT

- Sovereign high 31 cm
- Sovereign low 25 cm
- Sovereign shallow/Bed base 17 cm

(Divan measured from bottom edge to top edge)

gsm - grammes per square metre

Divan skirt shown on photo is available at an additional cost.

VISPRING

Luxury Beds - London 1901

THE LUXE COLLECTION

TIARA SUPERB + SOVEREIGN DIVAN



TIARA



MATTRESS

TECHNOLOGY

- Two layer hand-nested calico pocket spring construction
- Springs diameter: 60 mm
- 2924 springs in size 200 x 200 cm
- **2720 springs in size 180 x 200 cm**
- 2242 springs in size 150 x 200 cm
- 1360 springs in size 90 x 200 cm

UPHOLSTERY

- Exclusive natural fillings: blended real Shetland wool and cotton (1200 gsm), hand-teased South American horsetail (610 gsm) blended with Shetland wool (610 gsm), blended Shetland wool and cotton (1200 gsm)
- Finest quality ticking
- Hand-tied woollen tufts and twine
- Made with M-Pure - a natural flame retardant finish

BORDERS

- Upholstered with coir and wool
- 3 rows of hand side-stitching
- Horizontal handles
- Air vents
- Overall mattress depth: 23 cm + 6 cm doming (+/- 2 cm)



SOVEREIGN



DIVAN

CONSTRUCTION

- Hand-nested calico pocket spring construction
- 1660 springs in size 180 x 200 cm
- Solid timber frame

UPHOLSTERY

- Coir (1200 gsm), blended British fleece wool and cotton (1200 gsm)
- Finest quality ticking or upholstery fabric

HEIGHT

- Sovereign high 31 cm
- Sovereign low 25 cm
- Sovereign shallow/Bed base 17 cm

(Divan measured from bottom edge to top edge)

gsm - grammes per square metre

VISPRING

Luxury Beds - London 1901

THE LUXE COLLECTION

MARQUESS SUPERB MATTRESS + SOVEREIGN DIVAN



MARQUESS SUPERB



MATTRESS

TECHNOLOGY

- Two layer hand-nested calico pocket spring construction
- Springs diameter: 60 mm
- 2924 springs in size 200 x 200 cm
- **2720 springs in size 180 x 200 cm**
- 2242 springs in size 150 x 200 cm
- 1360 springs in size 90 x 200 cm

UPHOLSTERY

- Exclusive natural fillings: bonded British fleece wool and cotton (1350 gsm), British fleece wool (600 gsm), blended real Shetland wool and cotton (1200 gsm), silk (200 gsm)
- Finest quality ticking
- Hand-tied woollen tufts and twine
- Made with M-Pure - a natural flame retardant finish

BORDERS

- Upholstered with coir and wool
- 3 rows of hand side-stitching
- Horizontal handles
- Air vents
- Overall mattress depth: 23 cm + 6 cm doming (+/- 2 cm)



SOVEREIGN



DIVAN

CONSTRUCTION

- Hand-nested calico pocket spring construction
- 1660 springs in size 180 x 200 cm
- Solid timber frame

UPHOLSTERY

- Coir (1200 gsm), blended British fleece wool and cotton (1200 gsm)
- Finest quality ticking or upholstery fabric

HEIGHT

- Sovereign high 31 cm
- Sovereign low 25 cm
- Sovereign shallow/Bed base 17 cm

(Divan measured from bottom edge to top edge)

gsm - grammes per square metre

VISPRING

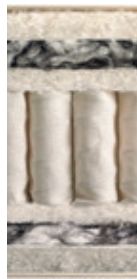
Luxury Beds - London 1901

THE CLASSIC COLLECTION

REGENT MATTRESS + PRESTIGE DIVAN



REGENT



MATTRESS

TECHNOLOGY

- Hand-nested calico pocket spring construction
- Springs diameter: 48 mm
- 2322 springs in size 200 x 200 cm
- **2107 springs in size 180 x 200 cm**
- 1720 springs in size 150 x 200 cm
- 1032 springs in size 90 x 200 cm

UPHOLSTERY

- Exclusive natural fillings: British Fleece Wool (300 gsm), hand-teased South American horsetail (400 gsm), hand-teased real Shetland wool (800 gsm) blended with silk (200 gsm) and mohair (200 gsm), blended real Shetland wool and cotton (900 gsm)
- Finest quality ticking
- Hand-tied woollen tufts and twine
- Made with M-Pure - a natural flame retardant finish

BORDERS

- Upholstered with protective wool
- 3 rows of hand side-stitching
- Horizontal handles
- Air vents
- Overall mattress depth: 23 cm + 6 cm doming (+/- 2 cm)



PRESTIGE



DIVAN

CONSTRUCTION

- Hand-nested pocket spring construction
- 1212 springs in size 180 x 200 cm
- Solid timber frame

UPHOLSTERY

- Coir (1200 gsm), blended British fleece wool and cotton (1200 gsm)
- Finest quality ticking or upholstery fabric

HEIGHT

- Prestige high 31 cm
- Prestige low 25 cm
- Prestige shallow/Bed Base 17 cm

(Divan measured from bottom edge to top edge)

gsm - grammes per square metre

VISPRING

Luxury Beds - London 1901

THE CLASSIC COLLECTION

REGAL SUPERB MATTRESS + PRESTIGE DIVAN



REGAL SUPERB



MATTRESS

TECHNOLOGY

- Hand-nested calico pocket spring construction
- Springs diameter: 48 mm
- 2322 springs in size 200 x 200 cm
- **2107 springs in size 180 x 200 cm**
- 1720 springs in size 150 x 200 cm
- 1032 springs in size 90 x 200 cm

UPHOLSTERY

- Exclusive natural fillings: bonded British fleece wool and cotton (1000 gsm), South American horsetail blended with British fleece wool (1200 gsm), blended real Shetland wool and cotton (900 gsm)
- Finest quality ticking
- Hand tufted with felt washers
- Made with M-Pure - a natural flame retardant finish

BORDERS

- Upholstered with protective wool
- 3 rows of hand side-stitching
- Horizontal handles
- Air vents
- Overall mattress depth: 23 cm + 6 cm doming (+/- 2 cm)



PRESTIGE



DIVAN

CONSTRUCTION

- Hand-nested pocket spring construction
- 1212 springs in size 180 x 200 cm
- Solid timber frame

UPHOLSTERY

- Coir (1200 gsm), blended British fleece wool and cotton (1200 gsm)
- Finest quality ticking or upholstery fabric

HEIGHT

- Prestige high 31 cm
- Prestige low 25 cm
- Prestige shallow/Bed base 17 cm

(Divan measured from bottom edge to top edge)

gsm - grammes per square metre

VISPRING

Luxury Beds - London 1901

THE CLASSIC COLLECTION

HERALD SUPERB MATTRESS + PRESTIGE DIVAN



HERALD SUPERB



MATTRESS

TECHNOLOGY

- Hand-nested calico pocket spring construction
- Springs diameter: 51 mm
- 1968 springs in size 200 x 200 cm
- **1804 springs in size 180 x 200 cm**
- 1476 springs in size 150 x 200 cm
- 861 springs in size 90 x 200 cm

UPHOLSTERY

- Exclusive natural fillings: bonded British fleece wool and cotton (1000 gsm), horsehair (1200 gsm), blended British fleece wool and cotton (1200 gsm)
- Finest quality ticking
- Hand tufted with felt washers
- Made with M-Pure - a natural flame retardant finish

BORDERS

- Upholstered with protective wool
- 2 rows of hand side-stitching
- Horizontal handles
- Air vents
- Overall mattress depth: 21 cm + 6 cm doming (+/- 2 cm)



PRESTIGE



DIVAN

CONSTRUCTION

- Hand-nested pocket spring construction
- 1212 springs in size 180 x 200 cm
- Solid timber frame

UPHOLSTERY

- Coir (1200 gsm), blended British fleece wool and cotton (1200 gsm)
- Finest quality ticking or upholstery fabric

HEIGHT

- Prestige high 31 cm
- Prestige low 25 cm
- Prestige shallow/Bed base 17 cm

(Divan measured from bottom edge to top edge)

gsm - grammes per square metre

VISPRING

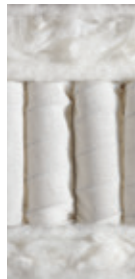
Luxury Beds - London 1901

THE ORIGINAL COLLECTION

DEVONSHIRE MATTRESS + WOOL DE LUXE DIVAN



DEVONSHIRE



MATTRESS

TECHNOLOGY

- Hand-nested calico pocket spring construction
- Springs diameter: 54 mm
- 1794 springs in size 200 x 200 cm
- **1638 springs in size 180 x 200 cm**
- 1326 springs in size 150 x 200 cm
- 780 springs in size 90 x 200 cm

UPHOLSTERY

- Exclusive natural fillings: British fleece wool (300 gsm), hand-teased Devonshire wool (1700 gsm), British fleece wool (600 gsm)
- Only available in viscose wool blend ticking (TK 596)
- Hand tufted with felt washers
- Made with M-Pure - a natural flame retardant finish

BORDERS

- Upholstered with protective wool
- 2 rows of hand side-stitching
- Horizontal handles
- Air vents
- Overall mattress depth: 21 cm + 6 cm doming (+/- 2 cm)



WOOL DE LUXE



DIVAN

CONSTRUCTION

- Hand-nested pocket spring construction
- 756 springs in size 180 x 200 cm
- Solid timber frame

UPHOLSTERY

- Softly needled (600 gsm) and heavily needled British fleece wool (600 gsm)
- Finest quality ticking or upholstery fabric

HEIGHT

- Wool De Luxe high 31 cm
- Wool De Luxe low 25 cm
- Wool De Luxe shallow/Bed base 17 cm

(Divan measured from bottom edge to top edge)

gsm - grammes per square metre

VISPRING

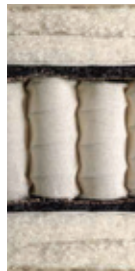
Luxury Beds - London 1901

THE ORIGINAL COLLECTION

BARONET SUPERB MATTRESS + DE LUXE DIVAN



BARONET SUPERB



MATTRESS

TECHNOLOGY

- Hand-nested calico pocket spring construction
- Springs diameter: 54 mm
- 1794 springs in size 200 x 200 cm
- **1638 springs in size 180 x 200 cm**
- 1326 springs in size 150 x 200 cm
- 780 springs in size 90 x 200 cm

UPHOLSTERY

- Exclusive natural fillings: horsehair (900 gsm), bonded British fleece wool and cotton (1000 gsm), blended British fleece wool and cotton (1200 gsm)
- Finest quality ticking
- Hand tufted with felt washers
- Made with M-Pure - a natural flame retardant finish

BORDERS

- Upholstered with protective wool
- 2 rows of hand side-stitching
- Horizontal handles
- Air vents
- Overall mattress depth: 21 cm + 6 cm doming (+/- 2 cm)



DE LUXE



DIVAN

CONSTRUCTION

- Hand-nested pocket spring construction
- 756 springs in size 180 x 200 cm
- Solid timber frame

UPHOLSTERY

- Coir (1200 gsm), blended British fleece wool and cotton (1200 gsm)
- Finest quality ticking or upholstery fabric

HEIGHT

- De Luxe high 31 cm
- De Luxe low 25 cm
- De Luxe shallow/Bed base 17 cm

(Divan measured from bottom edge to top edge)

gsm - grammes per square metre

VISPRING

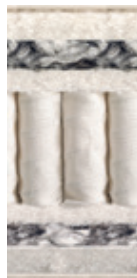
Luxury Beds - London 1901

VISPRING LIMITED EDITION SETS

LIMITED EDITION CAROLINE



CAROLINE



MATTRESS

TECHNOLOGY

- Single layer hand-nested calico pocket spring construction
- Springs diameter: 54 mm
- 1794 springs in size 200 x 200 cm
- **1638 springs in size 180 x 200 cm**
- 1326 springs in size 150 x 200 cm
- 780 springs in size 90 x 200 cm

UPHOLSTERY

- Limited Edition model hand crafted using a combination of luxurious and totally natural fillings. Tencel, bamboo and alpaca blended with wool (250 gsm), horsehair blended with wool (200 gsm) and layers of British fleece wool and cotton (1800 gsm)
- High quality Belgian ticking: TICK-1007
- Hand tufted with felt tufts
- Made with M-Pure - a natural flame retardant finish

BORDERS

- Upholstered with British fleece wool
- 2 rows of hand side-stitching
- Horizontal handles
- Air vents
- Overall mattress depth: 21 cm + 6 cm doming (+/- 2 cm)



CAROLINE



DIVAN

CONSTRUCTION

- Shallow De Luxe Divan 17 cm
- 756 springs in size 180 x 200 cm
- Solid timber frame

UPHOLSTERY

- Coir (1200 gsm), blended British fleece wool and cotton (900 gsm)

gsm - grammes per square metre

The Limited Edition Caroline includes a new contemporary headboard and 15 cm matt anthracite legs, both exclusive to this model.

Specifications:

Available only as a set comprising mattress, divan, legs and headboard.

4 square corners on mattress & divan.

Legs:

2 x L10 (Caroline leg) 15cm high, matt anthracite finish (exclusive to Caroline).
2 or 6 L9

Visible headboard height from mattress top: 57cm.
Headboard depth: 11,5cm




Only available in the following sizes:

90 x 200 cm, 90 x 210 cm, 90 x 220 cm
100 x 200 cm, 100 x 210 cm, 100 x 220 cm
150 x 200 cm, 150 x 210 cm, 150 x 220 cm
160 x 200 cm, 160 x 210 cm, 160 x 220 cm
180 x 200 cm, 180 x 210 cm, 180 x 220 cm
200 x 200 cm, 200 x 210 cm, 200 x 220 cm

VISPRING

Luxury Beds - London 1901

LEGS AND CASTORS

LEG	Description	Finishes Available	Height
 L1	Wooden leg	Natural, Mahogany, Ebony, Steel (No charge with Shallow divan)	7,5 cm 13 cm 15 cm 18 cm 23 cm
 L2	Wooden leg	Natural, Mahogany, Ebony, Steel	3 cm 5 cm 9 cm 15 cm
 L3	Wooden leg	Natural, Mahogany, Ebony, Steel	6,5 cm
 L4	Metal leg	Chrome (No charge with Shallow divan)	13 cm 15 cm 18 cm 23 cm
 L5	Metal leg	Bronze	15 cm

LEG	Description	Finishes Available	Height
 B1	Wooden bun foot	Natural, Mahogany, Ebony, Steel	7 cm
 B2	Metal/Wooden bun foot	Metal: Bronze, Chrome Wood: Natural, Mahogany, Ebony, Steel	6,5 cm
 C1	Shepherd castor	Polypropylene	7 cm
 C2	Locking Castor	Polypropylene	8,5 cm
 C3	Castor Cup for C1 Castor	Natural, Mahogany, Ebony, Steel	7,5 cm
 C4	Castor Cup for C1 Castor	Plastic, grey	7,5 cm

L3 AND L5 LEGS - QUANTITY	Default		>200 cm long, Viceroy, Drawer Divan		President	
	Corner	Centre	Corner	Centre	Corner	Centre
Twin	4		4	2	4	4
Double/Queen	4	2	4	2	4	4
Linked Divans: one-piece mattress	4	2	4	6	4	10
Linked Divans: Z & L sets	8		8	4	8	8

LEGS/CASTORS/BUN FEET (except legs L3 and L5 left)	Default	>200cm long, Viceroy, Drawer Divan	President
	Quantity	Quantity	Quantity
Twin	4	6	8
Double/Queen	8	8	12
Linked Divans: one-piece mattress	8	12	16
Linked Divans: Z & L sets	8	12	16



HEADBOARDS

VISPRING

Luxury Beds - London 1901

Headboards

GROUP I



Theia



Asteria

	Height	Thickness
Theia	120 cm	5 cm
Asteria	120 cm	4 cm

GROUP II



Rhea



Iris



Muses



Victoria

	Visible height	Thickness
Rhea	55 cm	8 cm
Iris	62 cm	8 cm
Muses	55 cm	6,5 cm
Victoria	70 cm	11,6 cm

GROUP III



Artemis



Helios

	Visible height	Thickness
Artemis	62 cm	8 cm
Helios	66 cm	8 cm

VISPRING

Luxury Beds - London 1901

GROUP IV



Themis



Elba



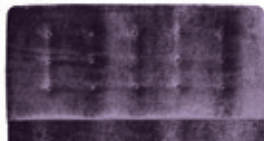
Enyo



Palladio

	Visible height	Thickness
Themis	Own choice	10 cm
Elba	62 cm	7 cm
Enyo	65 cm	6,5 cm
Palladio	48 cm	12 cm

GROUP V



Achilles



Aldo



Atlas



Ceto



Clabon



Eccleston



Lennox



Moncorvo

	Visible height	Thickness
Achilles	80 cm	11,3 cm
Aldo	96 cm	14,5 cm
Atlas	90 cm	12 cm
Ceto	75 cm	12 cm
Clabon	76 cm	9 cm / 12 cm **
Eccleston	76 cm*	9 cm / 12 cm **
Lennox	76 cm*	9 cm / 12 cm **
Moncorvo	76 cm*	9 cm / 12 cm **

* Height can vary with width

** 9 cm in headboards up to 160 cm wide.
12 cm in headboards over 160 cm wide.

GROUP VI



Berkeley



Gate



Grand Berkeley

	Height from floor	Thickness	Wing width
Berkeley	167 cm/177 cm*	9,5 cm	N/A
Gate	119,6 cm**	11,5 cm	27 cm
Grand Berkeley	167 cm/177 cm*	9,5 cm	91,3 cm

IMPORTANT:

- All headboards are bolt-through
- All headboards, except Theia, Asteria and Victoria, are upholstered on both sides as standard.
- Visible height is measured from the mattress tape edge. Overall headboard height will vary with mattress and divan selections and in the case of floor-standing headboards with leg/castor option
- All headboards are available in non-standard sizes: price upon request
- Other request: price upon requests.

*167 cm for headboards up to 200 cm, 177 cm for headboards over 200 cm

**Gate headboard's height varies with the height of the divan and leg.



ACCESSORIES

Accessories

MATTRESS TOPPERS

A mattress topper will add a layer of luxury to your bed. Our toppers are handmade to any size, to fit your bed perfectly. It is also the perfect choice if you have a bedstead with a slatted base and will enhance the comfort of your mattress.

There are four options in the range, each hand-filled with only the finest natural fibres for superb comfort. Choose from two stylish ticking designs for a bespoke finish: Vispring Logo or Plain Satin.

Mattress toppers are not suitable for washing or dry cleaning.

Heaven Luxury Supreme

Fabrics: Tick-533, Tick-534, Tick-556, Tick-593
Piping in contrasting wool: Tick-2095
Height: 10 cm

Upholstery: British fleece wool (300 gsm)
British fleece wool (600 gsm)
Layer of 1000 gsm horse tail
British fleece wool (600 gsm)
British fleece wool (300 gsm)



Heaven Luxury

Fabrics: Tick-533, Tick-534, Tick-556, Tick-593
Piping in contrasting wool: Tick-850
Height: 7 cm

Upholstery: British fleece wool (300 gsm)
Blended British fleece wool and cotton (1200 gsm)
British fleece wool (300 gsm)



VISPRING

Luxury Beds - London 1901

Heaven

Fabrics: Tick-533, Tick-534, Tick-556, Tick-593
Piping in same fabric as topper
Height: 5 cm

Upholstery: British fleece wool (300 gsm)
Soft needled British fleece wool (600 gsm)
British fleece wool (300 gsm)

M-Pure
PURE AND NATURAL™



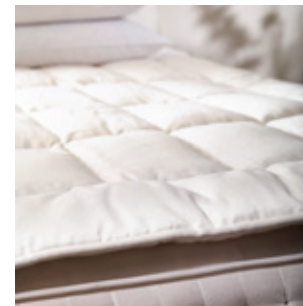
Dream

Fabrics: Tick-533, Tick-534, Tick-556, Tick-593
Piping in same fabric as topper.
Height: 4 cm

Upholstery: Blended British fleece wool and cotton (1000 gsm)

gsm - grammes per square metre

M-Pure
PURE AND NATURAL™



VISPRING

Luxury Beds - London 1901

DRAWER DIVAN

Extra cost to be added to the price of a high divan per drawer (see price list)



Foot-end standard side drawers
with head-end continental drawer



Foot-end large drawer with
head-end continental drawer



Foot-end large drawer with
head-end standard side drawer

The above are popular drawer configurations. Other drawer configurations are possible.

Drawers can only be fitted on the high 31 cm divan. The foot-end large drawer is only available on 135 cm or 150 cm divans. The shorter springs in drawer divans make them slightly firmer than high divans. Drawers cannot be fitted on the Viceroy or President divans.

Drawer sizes

Continental Drawer	41 cm wide x 58 cm deep x 13 cm high
Standard Drawer	76 cm wide x 58 cm deep x 13 cm high
Foot End Drawer - 135 cm wide divan	117 cm wide x 58 cm deep x 11 cm high
Foot End Drawer - 150 cm wide divan	132 cm wide x 58 cm deep x 11 cm high

Construction of drawer

Gaboon Plywood Timber from certified FSC source (Forest Stewardship Council)

All joints - Dovetailed

VISPRING

Luxury Beds - London 1901

DIVAN HEIGHTS

Choose from three* different divan heights, depending on the style of your bedroom and your preferences about ease of access to your bed.



17 cm shallow sprung divan



25 cm low sprung divan



31 cm high sprung divan

Divan height is from bottom edge to top edge. “Doming” effect of upholstery fillings will add approximately 4 cm to the height if measured at the centre. Shepherd castors will add 7 cm, and locking castors 8,5 cm to the height from the floor to the bottom edge of the divan. The shorter springs in the shallow sprung divan and the low sprung divan make them slightly firmer.

*President and Viceroy divans available in 25 cm and 33 cm heights only.

DIVAN SPLITS

150 x 200 cm two piece divan (east - west split) Z & L two piece divan (north - south split)

All sizes above 150 cm wide are two piece divans, and come with a north - south split. Upon request the split can be changed to east - west.

Divan base in quarter option available.

VISPRING

Luxury Beds - London 1901

DIVAN CORNERS

The following defaults apply, regardless of geographic territory, to define whether a divan has 4 round corners or 2 round and 2 square corners.

Divan Model	Single	East/West split divans	Linked divans with one-piece mattress	Linked divans with zipped mattresses
De Luxe/Wool De Luxe	All round	2 round and 2 square	2 round and 2 square	All round
Prestige	All round	2 round and 2 square	2 round and 2 square	All round
Sovereign	All round	2 round and 2 square	2 round and 2 square	All round
Viceroy	All round	2 round and 2 square	2 round and 2 square	All round
President	All round	2 round and 2 square	2 round and 2 square	All round

The fitment of skirts does not alter any of the above.

Any other corner configuration must be specified on the sales order.

PLEASE NOTE: Above is default. If you want to order a divan with all square corners, please specify this on sales order.

VISPRING

Luxury Beds - London 1901

DIVAN SKIRTS

- Available as a supplement on President, Sovereign, Prestige and De Luxe divans. FOC on a Viceroy divan.

Please note. When adding a skirt to a base with supplement fabric, supplement fabric price will need to be added to skirt and divan.



ZIPPING

4 zips standard on zips and link sets which allows turning of the mattress in all directions.

(Surcharges apply)



CUT-OUT CORNERS

Cut our corners for four-poster beds.

Priced per corner (see price list). Measurements and/or template will be required from the retailer/customer. Remember to allow "tucking-in" room for bed linens.



MANTLE

To conceal the gap between divan bases.

Available as a supplement on all divans (FOC on Sovereign).

Mantles are not available on:

- Drawer divans
- Divans with skirts



VISPRING

Luxury Beds - London 1901

LOOSE BEDSKIRTS

Loose covers are a good way of changing the look of your divan to a fabric of your choice (not available on Drawer Divans).
Price on application.



FITTED DIVAN COVER

Fitted divan covers are a good way of changing the look of your divan to a fabric of your choice (not available on Drawer Divans).

NOTE: Only available when ordering a Vispring divan base. Available in Vispring fabrics only.



QUILTED MATTRESS PROTECTORS

To put on top of the mattress.

Vispring recommends the use of a mattress protector to keep your mattress in beautiful condition.

The quilted mattress protector is made from softly quilted percale cotton with a pure new wool filling.

Available in all standard sizes and made to order for non standard sizes.



WOOL MATTRESS PAD

To put underneath the mattress, e.g. on mattresses with a slatted base.

The Vispring mattress pad provides protection between your Vispring mattress and the base of your bedstead, extending the life of your mattress and enhancing comfort.

We recommend that bedstead slats should be no more than 7,5 cm apart.



VISPRING

Luxury Beds - London 1901

PILLOWS

To complement the finest beds in the world, we have created a collection of luxuriously supportive pillows. All pillows are made with Vispring Comfort Chamber technology:

Outer Chambers

90% down, 10% feather filling to providing a wonderfully soft and breathable layer.

Inner Chamber

100% feather filling to provide perfect support for the neck

Hungarian Goose Feather and Down pillow

- Simply the ultimate luxury pillow experience
- The highest quality Hungarian Goose Feather and Down for miraculous lightness and lofty support.
- Full 3 Comfort Chamber technology for beautiful feel and neck support control
- Outstanding temperature regulation
- 100% natural cotton cover with beige piping

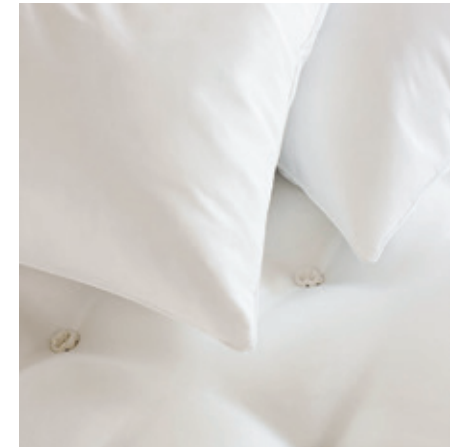
Pyrenean Duck Feather and Down

- Luxurious blend of Pyrenean Duck Feather and Down
- 3 Comfort Chamber technology providing wonderful softness and essential support
- Helps to naturally regulate temperature; a cooler pillow on warm nights
- 100% natural cotton cover with grey piping

European Duck Feather and Down

- A natural combination of Duck Feather and Down for complete night-long comfort.
- Single Comfort Chamber providing support and comfort: 95% European Duck Feather, 5% European Duck Down
- Helps to naturally regulate temperature; a cooler pillow on warm nights
- 100% natural cotton cover with white piping

SIZES AVAILABLE: Standard (75 x 50 cm), King size (90 x 50 cm) and Square (65 x 65 cm)



VISPRING

Luxury Beds - London 1901

DUVETS

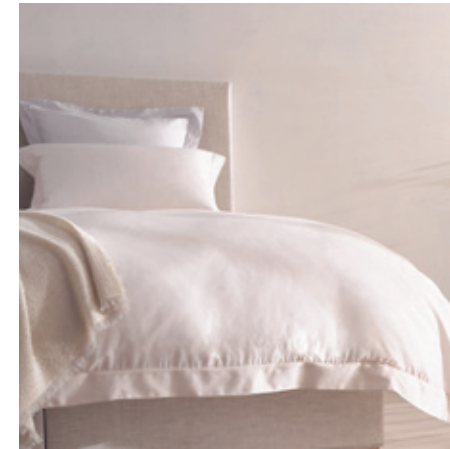
Discover the extravagantly soft, cosy, breathing duvets your Vispring bed deserves.

Hungarian Goose Down Duvet

- 100% Hungarian Goose Down Duvet for exceptional comfort and warmth.
- Excellent recovery and voluminosity for maximum comfort
- 750 Fill Power for exceptional insulation and air circulation
- 100% Cotton Satin covers with extremely high 395 thread count for a beautiful satin sheen and touch and protection against feathers penetrating the fabric
- Weight: 190 g/m²
- Available in two sizes: 230 x 220 cm and 260 x 220 cm.

Pyrenean Duck Down and Feather Duvet

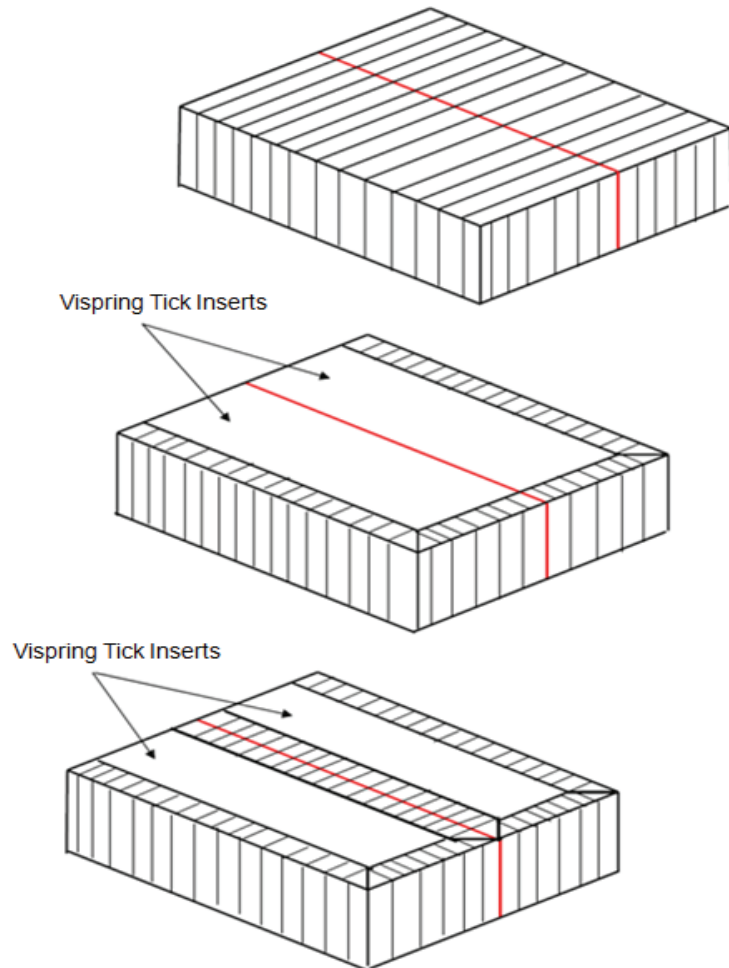
- A luxurious combination of 90% Pyrenean duck down and 10% Pyrenean duck feathers
- 100% Cotton Satin supremely soft duvet cover with tightly woven 293 thread count
- 700 Fill Power for insulation and air circulation
- Weight: 220 g/m²
- Available in two sizes: 230 x 220 cm and 260 x 220 cm.



Customer's Own Material (C.O.M.) on divans and headboards:

Materials not chosen from a Vispring swatch.

Please specify the model when ordering divans in C.O.M.



Model I

C.O.M. all over the divan. Not suitable for velvets as the mattress "travels" on the pile of the velvet. May require joins in the panel depending on the size of the divans.

Model II

Suitable for one-piece super-king size mattresses where the two divan pieces will not be separated and is the default for double/kings (where the split runs at 90 degrees to that shown). Plain fabric insert and plain border between the two halves of the divan.

Model III

A compromise in terms of fabric requirement. Suitable for zip & link sets where the bases might be separated. Plain fabric inserts on the two divan panels.

Please note:

Velvets are rail-roaded (i.e. the pile lies left to right) rather than the traditional up-down. This is done to avoid the need for seams in the divan borders.

Silks are to be avoided on the divan as the fabric shows the "bite" of the staples on the bottom edge of the divan.

CUSTOMER'S OWN MATERIAL (C.O.M.) on DIVANS

Fabric requirement for Customer's Own Material

Single & Rigid (one piece) models

The fabric is 140 cm wide and has no pattern repeat. (Model II is not available)

Single	Model I	Model I Drawer Divan	Model I with Skirts	Model III	Model III Drawer Divan	Model III with Skirts
90 x 190	6,5 m	8,5 m	8,5 m	6,5 m	6,5 m	6,5 m
90 x 200	7 m	8,5 m	8,5 m	6,5 m	6,5 m	6,5 m
90 x 210	7 m	8,5 m	8,5 m	6,5 m	6,5 m	6,5 m
100 x 200	9 m	8,5 m	8,5 m	6,5 m	6,5 m	6,5 m
100 x 210	9 m	9 m	9 m	7 m	7 m	7 m
107 x 215	9 m	9 m	9 m	7 m	7 m	7 m

Rigid Models	Model I	Model I Drawer Divan	Model I with Skirts	Model III	Model III Drawer Divan	Model III with Skirts
135 x 190 Rigid	9 m	9 m	9 m	7 m	7 m	7 m
150 x 200 Rigid*	9,5 m	9,5 m	9,5 m	7,5 m	7,5 m	7,5 m
182 x 200 Rigid*	10 m	10 m	10 m	8,5 m	8,5 m	8,5 m

VISPRING

Luxury Beds - London 1901

Fabric requirement for Customer's Own Material - Linked Sets

The fabric is 140 cm wide and has no pattern repeat.

Linked Sets	Model I	Model I Drawer Divan	Model I with Skirts	Model II	Model II Drawer Divan	Model II with Skirts	Model III	Model III Drawer Divan	Model III with Skirts
82.5 x 200 cm	10,5 m	10,5 m	10,5 m	4 m	6,5 m	7 m	6,5 m	8,5 m	9 m
90 x 190 cm	10 m	10 m	10,5 m	4 m	6,5 m	7 m	6,5 m	8,5 m	9 m
90 x 200 cm	10,5 m	10,5 m	10,5 m	4 m	6,5 m	7 m	6,5 m	8,5 m	9 m
90 x 210 cm	11 m	11 m	11 m	4,5 m	7 m	7,5 m	6,5 m	8,5 m	9 m
100 x 200 cm	10,5 m	10,5 m	10,5 m	4,5 m	7 m	7,5 m	6,5 m	8,5 m	9 m
100 x 210 cm	11 m	11 m	11 m	5 m	7,5 m	8 m	7 m	8,5 m	9 m
107 x 215 cm	11,5 m	11,5 m	11,5 m	5 m	7,5 m	8 m	7 m	8,5 m	9 m

CUSTOMER'S OWN MATERIAL (C.O.M.) on HEADBOARDS

Fabric requirement for Customer's Own Material.
The fabric is 140 cm wide and has no pattern repeat.

Headboard	Side(s)	90	120	135	162	182	202	222
Achilles Up to 130 cm high	Front	3,5 m	3,7 m	5 m	5,5 m	5,5 m	7 m	7 m
	Front & Back	4,5 m	5,5 m	6,5 m	7,5 m	7,5 m	9,5 m	9,5 m
Aldo	Front	5,5 m	5 m	5,5 m	6 m	6,5 m	7 m	7,5 m
	Front & Back	5,5 m	6,5 m	7 m	8 m	8,5 m	9 m	9,5 m
Artemis	Front	4,5 m	5 m	8 m	5,5 m	6 m	6 m	7 m
	Front & Back	5,5 m	6 m	6 m	6,5 m	7 m	7 m	8 m
Asteria	Front	n/a	n/a	n/a	n/a	n/a	n/a	n/a
	Front & Back	n/a	n/a	n/a	n/a	n/a	n/a	n/a
Atlas	Front	5 m	5,5 m	5,5 m	6 m	6 m	6,5 m	7 m
	Front & Back	6 m	7 m	7 m	8 m	8 m	9 m	9,5 m
Berkeley	Front	7 m	8 m	9 m	11 m	12 m	12 m	13 m
	Front & Back	n/a	n/a	n/a	n/a	n/a	n/a	n/a
Ceto	Front	5 m	5,5 m	5,5 m	6 m	6 m	6,5 m	7 m
	Front & Back	6 m	7 m	7 m	8 m	8 m	9 m	9,5 m
Clabon	Front	4,5 m	5 m	5 m	5,5 m	6 m	6,5 m	7 m
	Front & Back	5,5 m	6 m	6 m	6,5 m	7 m	7,5 m	8 m
Eccleston	Front	4,5 m	5 m	5 m	5,5 m	6 m	6,5 m	7 m
	Front & Back	5,5 m	6 m	6 m	6,5 m	7 m	7,5 m	8 m
Elba Up to 124 cm high	Front	n/a	n/a	n/a	n/a	n/a	n/a	n/a
	Front & Back	3,5 m	4 m	4,5 m	5 m	5,5 m	5,5 m	6 m
Enyo	Front	4,5 m	4,5 m	5,5 m	5,5 m	6 m	6 m	6,5 m
	Front & Back	5,5 m	6 m	6 m	7,5 m	8 m	8 m	8,5 m
Gate	Front	5 m	5,5 m	6 m	7 m	9 m	9 m	10 m
	Front & Back	6 m	8 m	10 m	11 m	13 m	13 m	14 m

VISPRING

Luxury Beds - London 1901

Headboard	Side(s)	90	120	135	162	182	202	222
Grand Berkeley	Front	n/a	n/a	n/a	n/a	n/a	n/a	n/a
	Front & Back	n/a	n/a	n/a	n/a	n/a	n/a	n/a
Helios	Front	4,5 m	4,5 m	4,5 m	5,5 m	6 m	6 m	6,5 m
	Front & Back	5,5 m	6 m	6 m	7,5m	8 m	8 m	8,5 m
Iris	Front	4,5 m	5 m	5 m	5,5 m	6 m	6 m	7 m
	Front & Back	5,5 m	6 m	6 m	6,5 m	7 m	7 m	8 m
Lennox	Front	4,5 m	5 m	5 m	5,5 m	6 m	6,5 m	7 m
	Front & Back	5,5 m	6 m	6 m	6,5 m	7 m	7,5 m	8 m
Moncorvo	Front	4,5 m	5 m	5 m	5,5 m	6 m	6,5 m	7 m
	Front & Back	5,5 m	6 m	6 m	6,5 m	7 m	7,5 m	8 m
Muses	Front	2,5 m	2,5 m	3 m	3 m	3,5 m	3,5 m	4 m
	Front & Back	3,5 m	3,5 m	4,5 m	5 m	5,5 m	5,5 m	6,5 m
Palladio Based on orders with no joints	Front	5,6 m	5,6 m	6,5 m	7 m	9 m	9 m	9 m
	Front & Back	6,6 m	6,6 m	8 m	8,5 m	9,5 m	9,5 m	9,5 m
Rhea (HB 32)	Front	2,5 m	2,5 m	3 m	3 m	3,5 m	3,5 m	4 m
	Front & Back	3,5 m	3,5 m	4,5 m	4,5 m	5,5 m	5,5 m	6,5 m
Theia	Front	n/a	n/a	n/a	n/a	n/a	n/a	n/a
	Front & Back	n/a	n/a	n/a	n/a	n/a	n/a	n/a
Themis (HB 110) Always front and back	</= 117cm	3,5 m	4 m	4,5 m	5 m	5 m	5,5 m	6 m
	> 117cm	4,5 m	5,5 m	6 m	7 m	7 m	7,5 m	8,5 m
Victoria	Front	5 m	5,5 m	6 m	6 m	6 m	7 m	7,5 m
	Front & Back	6 m	6,5 m	7 m	8 m	8 m	8 m	9 m

NOTE: These are estimates only, based on a 140 cm fabric roll without pattern. The amount of fabric needed may differ depending on the width of the fabric roll, as well as pattern repeat. **Please confirm amount of fabric needed with Vispring before placing your order.**

Limited Edition Caroline is not available with C.O.M..

VISPRING

Luxury Beds - London 1901

General Information



TOO SOFT THE SPINE BOWS DOWNWARDS, CAUSING PRESSURE AROUND THE HIPS



TOO FIRM THE SPINE BOWS UPWARDS, CAUSING PRESSURE AROUND THE SHOULDERS AND KNEES



PERFECT SUPPORT THE SPINE IS STRAIGHT AND THE ENTIRE BODY IS EVENLY SUPPORTED

How to choose your bed

1 Try a number of beds

Vispring makes a range of beds, offering different spring tensions, fillings and sizes. Try a few in order to determine which one is the perfect option for you.

2 Do not rush your purchase

Finding your ideal level of support and cushioning takes time. Test each bed for at least 10 minutes, with your partner if you share a bed. Lie in the position you usually sleep in and turn over a few times.

3 Check the support

If the mattress is too firm, you will be able to slide your hand easily between the mattress and the hollow of your back. If the mattress is too soft, you will not be able to slide your hand beneath your back.

4 Measure your room

Buying the largest bed you can accommodate will reduce sleep disturbance. Vispring can make divans in sections to negotiate small entrances and tight staircases.

5 Make an investment

You will spend a third of your life in bed and a good night's sleep will contribute to your long term well-being, so it is worth investing in the best bed possible.

Mattress support guidelines

Up to 70kg	Soft
70kg - 102kg	Medium
102kg - 127kg	Firm
Above 127kg	Extra Firm

Combination Spring tension mattresses

There is no supplementary charge for this option. The combination spring tension option can only be offered for mattresses that are at least 150 cm wide. The combination choice and side must be specified when ordering either soft and medium, medium and firm or firm and extra firm. If you need a soft and firm or medium and extra firm combination then you must order a zip and link mattress as two steps in tension cannot be accommodated within a one piece mattress.

Product characteristics and recommendations to customers

Turning the mattress

We suggest that a Vispring mattress is occasionally turned (seasonal turning), by doing so you can extend its life.

Vispring mattresses have fillings on both sides which means not only do you enjoy an enhanced level of comfort but you have two possible sleeping surfaces. By turning the mattress the fillings will settle more evenly, the mattress will ventilate and thus the life of the mattress will be prolonged.

With very large mattresses, the weight involved can make mattress turning a daunting experience. Many users, with our approval, merely swing the mattress from end to end without even lifting it from the divan base.

Providing you understand that upholstery settlement will be evident more quickly, there is no reason for you to struggle with the mattress. The extra wire in every Vispring coil permits each spring to work to maximise efficiency and without any deterioration in resilience over the long lifetime of the mattress.

Upholstery settlement

Vispring mattresses have extremely generous upholstery with copious amounts of fillings on both sides of the mattress, designed to complement the springs and follow the body contours. This naturally takes longer to settle evenly than the upholstery found on other beds.

It is not possible to stipulate the exact settlement period, as the time taken will vary according to the filling types and quantities, and also the weight and sleeping pattern of the individual. Normally the upholstery in the centre of the mattress, where most of the body's weight is concentrated, will naturally 'bed down' quicker. Should you find at the early stages of the mattress's life that settlement is uneven and visually undesirable, we suggest that you turn your mattress, thus balancing out the pressure and allowing the fillings to settle more evenly, while you sleep on the opposite side of the mattress.

Caring for your bed/mattress

- Do not bend or roll your new mattress, it will permanently damage the spring unit and invalidate any warranties or guarantees.
- Let the mattress breathe, like a new car, a new bed may initially have a 'new' smell about it. This will eventually disperse if well aired.
- Body shaped impressions are normal, impression marks - sometimes known as settlement - are a normal characteristic of a quality mattress working as intended to conform to the shape of your body. These will be minimised with regular turning.
- Getting used to your new bed. Your body will take a while to adjust to sleeping on a new surface, so don't worry if your new bed doesn't immediately meet your expectations. Give it time - it could take a few weeks.
- Use a mattress protector to prolong the life of the mattress.

Packaging

All mattresses and divans are bagged and boxed to protect the product when in transit.

Other general information

On consumer orders for mattresses the tension is detailed on a label sewn into the head end of the mattress. Similarly, the divan model is on a label sewn into the head end. Only on shop floor display models are the tensions and divan names embroidered.

All deep divans have piped borders top and bottom, except when you choose a Faux Suede fabric, in which case the piping will be on bottom of the divan only. On bed bases we do not pipe the bottom of the divan.

Please note that a 90 cm mattress will feel firmer than a 150 cm mattress due to closer proximity of side stitching.

Please note a new mattress will feel firmer to begin with than an old mattress.

On a high divan we use a 150 mm pocket spring, on all other divans we use a 75 mm pocket spring.

You can use any of our mattresses on bedsteads. Please note that slats should be no wider apart than 7,5 cm, mattresses will always feel firmer on slats. We also recommend the use of a wool mattress pad for support.

On delivery it is common for the mattress to appear shorter than the divan. With regular use and turning the mattress will expand.




VISPRING

Luxury Beds - London 1901

VISPRING LIMITED

Ernesettle Lane
Plymouth, PL5 2TT
UNITED KINGDOM

Phone +44 1752 366311
Fax +44 1752 355108
Email infoeurope@vispring.com
www.vispring.com

 [vispringbeds](https://www.facebook.com/vispringbeds)
 [@vispring](https://twitter.com/@vispring)
 [vispringbeds](https://www.instagram.com/vispringbeds)

Vispring reserves the right to alter specifications without notice.
All measurements are approximate, small deviations are possible.

Printed for Europe in March 2020

© Vispring Limited 2020